



# Certificate of Analysis

QA SAMPLE - INFORMATIONAL ONLY

1 of 3

ICAL ID: 20230224-008  
Sample: CA230224-008-066  
Smoking Dog Mixed Berry Shot  
Strain: Smoking Dog Mixed Berry Shot  
Category: Ingestible  
Type: Beverage

CBD Living  
Lic. #  
None  
San Diego, CA 92121  
Lic. #

Batch#: 24006  
Batch Size Collected:  
Total Batch Size:  
Collected: 02/27/2023; Received: 02/27/2023  
Completed: 02/27/2023

Moisture NT Water Activity NT	Δ9-THC <b>108.26 mg/unit</b>	CBD <b>0.52 mg/unit</b>	Total Cannabinoids <b>113.32 mg/unit</b>	Total Terpenes NT
--	---------------------------------	----------------------------	---	----------------------

<b>Summary</b>	SOP Used	Date Tested	
Batch Cannabinoids	POT-PREP-002	02/24/2023	Complete Complete



Scan to see results

## Cannabinoid Profile

1 Unit = bottle, 60.38 g. 1 mL = 1.08 g.

Analyte	LOQ (mg/g)	LOD (mg/g)	%	mg/g	mg/mL	mg/unit	Analyte	LOQ (mg/g)	LOD (mg/g)	%	mg/g	mg/mL	mg/unit
THCa	0.0128	0.0043	ND	ND	ND	ND	CBGa	0.0046	0.0015	ND	ND	ND	ND
Δ9-THC	0.0046	0.0010	0.179	1.79	1.94	108.26	CBG	0.0046	0.0005	<LOQ	<1	<1	<LOQ
Δ8-THC	0.0046	0.0014	0.007	0.07	0.07	3.99	CBN	0.0046	0.0005	<LOQ	<1	<1	<LOQ
THCV	0.0046	0.0006	0.001	0.01	0.01	0.54	<b>Total THC</b>			<b>0.19</b>	<b>1.86</b>	<b>2.01</b>	<b>112.25</b>
CBDa	0.0049	0.0016	ND	ND	ND	ND	<b>Total CBD</b>			<b>0.00</b>	<b>0.01</b>	<b>0.01</b>	<b>0.52</b>
CBD	0.0046	0.0008	0.001	0.01	0.01	0.52	<b>Total</b>			<b>0.19</b>	<b>1.88</b>	<b>2.03</b>	<b>113.32</b>
CBDV	0.0046	0.0004	ND	ND	ND	ND							
CBC	0.0076	0.0025	<LOQ	<1	<1	<LOQ							

Total THC=THCa \* 0.877 + d9-THC + d8-THC; Total CBD = CBDa \* 0.877 + CBD. LOD= Limit of Detection, LOQ= Limit of Quantitation, ND= Not Detected, NR= Not Reported. Potency is reported on a dry weight basis. Instrumentation and analysis SOPs used: Cannabinoids:UHPLC-DAD(POT-INST-005),Moisture:Moisture Analyzer(MOISTURE-001),Water Activity:Water Activity Meter(WA-INST-002), Foreign Material:Microscope(FOREIGN-001). Density measured at 19-24 °C, Water Activity measured at 0-90% RH. All QA submitted by the client, All CA State Compliance sampled using SAMPL-SOP-001.

## Terpene Profile

Analyte	LOQ (mg/g)	LOD (mg/g)	%	mg/g	Analyte	LOQ (mg/g)	LOD (mg/g)	%	mg/g
---------	------------	------------	---	------	---------	------------	------------	---	------

NR= Not Reported (no analysis was performed), ND= Not Detected (the concentration is less than the Limit of Detection (LOD)). Analytical instrumentation used: HS-GC-MS; samples analyzed according to SOP TERP-INST-003.



Infinite Chemical Analysis Labs  
8312 Miramar Mall  
San Diego, CA  
(858) 623-2740  
www.infiniteCAL.com  
Lic# C8-000047-LIC

*Josh M Swider*

Josh Swider  
Lab Director, Managing Partner  
02/27/2023

Confident Cannabis  
All Rights Reserved  
support@confidentcannabis.com  
(866) 506-5866  
www.confidentcannabis.com



This product has been tested by Infinite Chemical Analysis, LLC using valid testing methodologies and a quality system as required by state law. All LQC samples were performed and met the prescribed acceptance criteria in 16 CCR section 15730, pursuant to 16 CCR section 15726(e)(13). Values reported relate only to the product tested. Infinite Chemical Analysis, LLC makes no claims as to the efficacy, safety or other risks associated with any detected or non-detected levels of any compounds reported herein. This Certificate shall not be reproduced except in full, without the written approval of Infinite Chemical Analysis, LLC.



# Certificate of Analysis

QA SAMPLE - INFORMATIONAL ONLY

1 of 3

ICAL ID: 20230224-009  
Sample: CA230224-008-067  
Smoking Dog Peach Mango Shot  
Strain: Smoking Dog Peach Mango Shot  
Category: Ingestible  
Type: Beverage

CBD Living  
Lic. #  
None  
San Diego, CA 92121  
Lic. #

Batch#: 24007  
Batch Size Collected:  
Total Batch Size:  
Collected: 02/27/2023; Received: 02/27/2023  
Completed: 02/27/2023

Moisture NT Water Activity NT	Δ9-THC <b>107.87 mg/unit</b>	CBD <b>0.52 mg/unit</b>	Total Cannabinoids <b>112.81 mg/unit</b>	Total Terpenes NT
--	---------------------------------	----------------------------	---	----------------------

<b>Summary</b>	SOP Used	Date Tested	
Batch Cannabinoids	POT-PREP-002	02/24/2023	Complete Complete



Scan to see results

## Cannabinoid Profile

1 Unit = bottle, 60.48 g. 1 mL = 1.07 g.

Analyte	LOQ (mg/g)	LOD (mg/g)	%	mg/g	mg/mL	mg/unit	Analyte	LOQ (mg/g)	LOD (mg/g)	%	mg/g	mg/mL	mg/unit
THCa	0.0128	0.0043	ND	ND	ND	ND	CBGa	0.0046	0.0015	ND	ND	ND	ND
Δ9-THC	0.0046	0.0010	0.178	1.78	1.91	107.87	CBG	0.0046	0.0005	<LOQ	<1	<1	<LOQ
Δ8-THC	0.0046	0.0014	0.006	0.06	0.07	3.87	CBN	0.0046	0.0005	<LOQ	<1	<1	<LOQ
THCV	0.0046	0.0006	0.001	0.01	0.01	0.54	<b>Total THC</b>			<b>0.18</b>	<b>1.85</b>	<b>1.98</b>	<b>111.74</b>
CBDa	0.0049	0.0016	ND	ND	ND	ND	<b>Total CBD</b>			<b>0.00</b>	<b>0.01</b>	<b>0.01</b>	<b>0.52</b>
CBD	0.0046	0.0008	0.001	0.01	0.01	0.52	<b>Total</b>			<b>0.19</b>	<b>1.87</b>	<b>2.00</b>	<b>112.81</b>
CBDV	0.0046	0.0004	ND	ND	ND	ND							
CBC	0.0076	0.0025	<LOQ	<1	<1	<LOQ							

Total THC=THCa \* 0.877 + d9-THC + d8-THC; Total CBD = CBDa \* 0.877 + CBD. LOD= Limit of Detection, LOQ= Limit of Quantitation, ND= Not Detected, NR= Not Reported. Potency is reported on a dry weight basis. Instrumentation and analysis SOPs used: Cannabinoids:UHPLC-DAD(POT-INST-005),Moisture:Moisture Analyzer(MOISTURE-001),Water Activity:Water Activity Meter(WA-INST-002), Foreign Material:Microscope(FOREIGN-001). Density measured at 19-24 °C, Water Activity measured at 0-90% RH. All QA submitted by the client, All CA State Compliance sampled using SAMPL-SOP-001.

## Terpene Profile

Analyte	LOQ (mg/g)	LOD (mg/g)	%	mg/g	Analyte	LOQ (mg/g)	LOD (mg/g)	%	mg/g
---------	------------	------------	---	------	---------	------------	------------	---	------

NR= Not Reported (no analysis was performed), ND= Not Detected (the concentration is less than the Limit of Detection (LOD)). Analytical instrumentation used: HS-GC-MS; samples analyzed according to SOP TERP-INST-003.



Infinite Chemical Analysis Labs  
8312 Miramar Mall  
San Diego, CA  
(858) 623-2740  
www.infiniteCAL.com  
Lic# C8-0000047-LIC

*Josh M Swider*

Josh Swider  
Lab Director, Managing Partner  
02/27/2023

Confident Cannabis  
All Rights Reserved  
support@confidentcannabis.com  
(866) 506-5866  
www.confidentcannabis.com



This product has been tested by Infinite Chemical Analysis, LLC using valid testing methodologies and a quality system as required by state law. All LQC samples were performed and met the prescribed acceptance criteria in 16 CCR section 15730, pursuant to 16 CCR section 15726(e)(13). Values reported relate only to the product tested. Infinite Chemical Analysis, LLC makes no claims as to the efficacy, safety or other risks associated with any detected or non-detected levels of any compounds reported herein. This Certificate shall not be reproduced except in full, without the written approval of Infinite Chemical Analysis, LLC.



# Certificate of Analysis

QA SAMPLE - INFORMATIONAL ONLY

1 of 3

ICAL ID: 20230227-031  
Sample: CA230227-006-012  
Smoking Dog Pineapple Banana Shot  
Strain: Smoking Dog Pineapple Banana Shot  
Category: Ingestible  
Type: Beverage

CBD Living  
Lic. #  
None  
San Diego, CA 92121  
Lic. #

Batch#: 24008  
Batch Size Collected:  
Total Batch Size:  
Collected: 02/28/2023; Received: 02/28/2023  
Completed: 02/28/2023

Moisture NT Water Activity NT	Δ9-THC <b>111.63 mg/unit</b>	CBD <b>0.54 mg/unit</b>	Total Cannabinoids <b>112.76 mg/unit</b>	Total Terpenes NT
--	---------------------------------	----------------------------	---	----------------------

<b>Summary</b>	SOP Used	Date Tested	
Batch Cannabinoids	POT-PREP-002	02/27/2023	Complete Complete



Scan to see results

## Cannabinoid Profile

1 Unit = bottle, 66 g. 1 mL = 1.1 g.

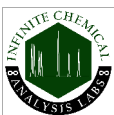
Analyte	LOQ (mg/g)	LOD (mg/g)	%	mg/g	mg/mL	mg/unit	Analyte	LOQ (mg/g)	LOD (mg/g)	%	mg/g	mg/mL	mg/unit
THCa	0.0128	0.0043	ND	ND	ND	ND	CBGa	0.0046	0.0015	ND	ND	ND	ND
Δ9-THC	0.0046	0.0010	0.169	1.69	1.86	111.63	CBG	0.0046	0.0005	<LOQ	<1	<1	<LOQ
Δ8-THC	0.0046	0.0014	ND	ND	ND	ND	CBN	0.0046	0.0005	<LOQ	<1	<1	<LOQ
THCV	0.0046	0.0006	0.001	0.01	0.01	0.59	<b>Total THC</b>			<b>0.17</b>	<b>1.69</b>	<b>1.86</b>	<b>111.63</b>
CBDa	0.0049	0.0016	ND	ND	ND	ND	<b>Total CBD</b>			<b>0.00</b>	<b>0.01</b>	<b>0.01</b>	<b>0.54</b>
CBD	0.0046	0.0008	0.001	0.01	0.01	0.54	<b>Total</b>			<b>0.17</b>	<b>1.71</b>	<b>1.88</b>	<b>112.76</b>
CBDV	0.0046	0.0004	ND	ND	ND	ND							
CBC	0.0076	0.0025	ND	ND	ND	ND							

Total THC=THCa \* 0.877 + d9-THC + d8-THC; Total CBD = CBDa \* 0.877 + CBD. LOD= Limit of Detection, LOQ= Limit of Quantitation, ND= Not Detected, NR= Not Reported. Potency is reported on a dry weight basis. Instrumentation and analysis SOPs used: Cannabinoids:UHPLC-DAD(POT-INST-005),Moisture:Moisture Analyzer(MOISTURE-001),Water Activity:Water Activity Meter(WA-INST-002), Foreign Material:Microscope(FOREIGN-001). Density measured at 19-24 °C, Water Activity measured at 0-90% RH. All QA submitted by the client, All CA State Compliance sampled using SAMPL-SOP-001.

## Terpene Profile

Analyte	LOQ (mg/g)	LOD (mg/g)	%	mg/g	Analyte	LOQ (mg/g)	LOD (mg/g)	%	mg/g
---------	------------	------------	---	------	---------	------------	------------	---	------

NR= Not Reported (no analysis was performed), ND= Not Detected (the concentration is less than the Limit of Detection (LOD)). Analytical instrumentation used: HS-GC-MS; samples analyzed according to SOP TERP-INST-003.



Infinite Chemical Analysis Labs  
8312 Miramar Mall  
San Diego, CA  
(858) 623-2740  
www.infiniteCAL.com  
Lic# C8-0000047-LIC

*Josh M Swider*

Josh Swider  
Lab Director, Managing Partner  
02/28/2023

Confident Cannabis  
All Rights Reserved  
support@confidentcannabis.com  
(866) 506-5866  
www.confidentcannabis.com



This product has been tested by Infinite Chemical Analysis, LLC using valid testing methodologies and a quality system as required by state law. All LQC samples were performed and met the prescribed acceptance criteria in 16 CCR section 15730, pursuant to 16 CCR section 15726(e)(13). Values reported relate only to the product tested. Infinite Chemical Analysis, LLC makes no claims as to the efficacy, safety or other risks associated with any detected or non-detected levels of any compounds reported herein. This Certificate shall not be reproduced except in full, without the written approval of Infinite Chemical Analysis, LLC.