



Certificate of Analysis

QA SAMPLE - INFORMATIONAL ONLY

1 of 3

ICAL ID: 20231102-018
Sample: CA231102-007-021
CBD Strawberry Banana Vape
Strain: CBD Strawberry Banana Vape
Category: Concentrates & Extracts
Type: Other

CBD Living
Lic. #
None
San Diego, CA 92121
Lic. #

Batch#:
Batch Size Collected:
Total Batch Size:
Collected: 11/06/2023; Received: 11/06/2023
Completed: 11/06/2023

Moisture NT Water Activity NT	Total THC 0.25%	Total CBD 42.85%	Total Cannabinoids 55.18%	Total Terpenes NT
--	---------------------------	----------------------------	-------------------------------------	----------------------

Summary	SOP Used	Date Tested	
Batch Cannabinoids	POT-PREP-001	11/03/2023	Complete Complete



Scan to see results

Cannabinoid Profile

Analyte	LOQ (mg/g)	LOD (mg/g)	%	mg/g	Analyte	LOQ (mg/g)	LOD (mg/g)	%	mg/g
THCa	0.3680	0.0924	ND	ND	CBGa	0.3965	0.1322	ND	ND
Δ9-THC	0.3680	0.1024	0.25	2.5	CBG	0.3920	0.1307	0.82	8.2
Δ8-THC	0.3680	0.0506	ND	ND	CBN	0.3680	0.0780	3.09	30.9
THCV	0.3680	0.0423	ND	ND	Total THC			0.25	2.54
CBDa	0.3680	0.0951	ND	ND	Total CBD			42.85	428.48
CBD	0.3680	0.0815	42.85	428.5	Total			55.18	551.79
CBDV	0.3680	0.0421	0.73	7.3					
CBC	0.4549	0.1516	7.44	74.4					

Total THC=THCa * 0.877 + d9-THC + d8-THC + d8-THC; Total CBD = CBDa * 0.877 + CBD. LOD= Limit of Detection, LOQ= Limit of Quantitation, ND= Not Detected, NR= Not Reported. Potency is reported on a dry weight basis. Instrumentation and analysis SOPs used: Cannabinoids:UHPLC-DAD(POT-INST-005),Moisture:Moisture Analyzer(MOISTURE-001),Water Activity:Water Activity Meter(WA-INST-002), Foreign Material:Microscope(FOREIGN-001). Density measured at 19-24 °C, Water Activity measured at 0-90% RH. All QA submitted by the client, All CA State Compliance sampled using SAMPL-SOP-001.

Terpene Profile

Analyte	LOQ (mg/g)	LOD (mg/g)	%	mg/g	Analyte	LOQ (mg/g)	LOD (mg/g)	%	mg/g
---------	------------	------------	---	------	---------	------------	------------	---	------

NR= Not Reported (no analysis was performed), ND= Not Detected (the concentration is less than the Limit of Detection (LOD)). Analytical instrumentation used: HS-GC-MS; samples analyzed according to SOP TERP-INST-003.



Infinite Chemical Analysis Labs
8312 Miramar Mall
San Diego, CA
(858) 623-2740
www.infiniteCAL.com
Lic# C8-000047-LIC

Josh M Swider
Josh Swider
Lab Director, Managing Partner
11/06/2023

Confident Cannabis
All Rights Reserved
support@confidentcannabis.com
(866) 506-5866
www.confidentcannabis.com



This product has been tested by Infinite Chemical Analysis, LLC using valid testing methodologies and a quality system as required by state law. All LQC samples were performed and met the prescribed acceptance criteria in 16 CCR section 15730, pursuant to 16 CCR section 15726(e)(13). Values reported relate only to the product tested. Infinite Chemical Analysis, LLC makes no claims as to the efficacy, safety or other risks associated with any detected or non-detected levels of any compounds reported herein. This Certificate shall not be reproduced except in full, without the written approval of Infinite Chemical Analysis, LLC.



Certificate of Analysis

QA SAMPLE - INFORMATIONAL ONLY

2 of 3

ICAL ID: 20231102-018
Sample: CA231102-007-021
CBD Strawberry Banana Vape
Strain: CBD Strawberry Banana Vape
Category: Concentrates & Extracts
Type: Other

CBD Living
Lic. #
None
San Diego, CA 92121
Lic. #

Batch#:
Batch Size Collected:
Total Batch Size:
Collected: 11/06/2023; Received: 11/06/2023
Completed: 11/06/2023

Residual Solvent Analysis

Category 1	LOQ	LOD	Limit	Status	Category 2	LOQ	LOD	Limit	Status	Category 2	LOQ	LOD	Limit	Status
------------	-----	-----	-------	--------	------------	-----	-----	-------	--------	------------	-----	-----	-------	--------

NR= Not Reported (no analysis was performed), ND= Not Detected (the concentration is less then the Limit of Detection (LOD)). Analytical instrumentation used: HS-GC-MS; samples analyzed according to SOP RS-INST-003.

Heavy Metal Screening

LOQ	LOD	Limit	Status
-----	-----	-------	--------

NR= Not Reported (no analysis was performed), ND= Not Detected (the concentration is less then the Limit of Detection (LOD)). Analytical instrumentation used: ICP-MS; samples analyzed according to SOP HM-INST-003.

Microbiological Screening

Limit	Result	Status
-------	--------	--------

ND=Not Detected. Analytical instrumentation used:qPCR; samples analyzed according to SOP MICRO-INST-001.



Infinite Chemical Analysis Labs
8312 Miramar Mall
San Diego, CA
(858) 623-2740
www.infiniteCAL.com
Lic# C8-0000047-LIC

Josh M Swider

Josh Swider
Lab Director, Managing Partner
11/06/2023

Confident Cannabis
All Rights Reserved
support@confidentcannabis.com
(866) 506-5866
www.confidentcannabis.com



This product has been tested by Infinite Chemical Analysis, LLC using valid testing methodologies and a quality system as required by state law. All LQC samples were performed and met the prescribed acceptance criteria in 16 CCR section 15730, pursuant to 16 CCR section 15726(e)(13). Values reported relate only to the product tested. Infinite Chemical Analysis, LLC makes no claims as to the efficacy, safety or other risks associated with any detected or non-detected levels of any compounds reported herein. This Certificate shall not be reproduced except in full, without the written approval of Infinite Chemical Analysis, LLC.



Certificate of Analysis

QA SAMPLE - INFORMATIONAL ONLY

3 of 3

ICAL ID: 20231102-018
Sample: CA231102-007-021
CBD Strawberry Banana Vape
Strain: CBD Strawberry Banana Vape
Category: Concentrates & Extracts
Type: Other

CBD Living
Lic. #
None
San Diego, CA 92121
Lic. #

Batch#:
Batch Size Collected:
Total Batch Size:
Collected: 11/06/2023; Received: 11/06/2023
Completed: 11/06/2023

Chemical Residue Screening

Category 1	LOQ	LOD	Status	Mycotoxins	LOQ	LOD	Limit	Status
------------	-----	-----	--------	------------	-----	-----	-------	--------

Category 2	LOQ	LOD	Limit	Status	Category 2	LOQ	LOD	Limit	Status
------------	-----	-----	-------	--------	------------	-----	-----	-------	--------

Other Analyte(s):

NR= Not Reported (no analysis was performed), ND= Not Detected (the concentration is less than the Limit of Detection (LOD)). Analytical instrumentation used: LC-MS-MS & GC-MS-MS; samples analyzed according to SOPs PESTMYCO-LC-INST-004 and PEST-GC-INST-003.



Infinite Chemical Analysis Labs
8312 Miramar Mall
San Diego, CA
(858) 623-2740
www.infiniteCAL.com
Lic# C8-0000047-LIC

Josh M Swider

Josh Swider
Lab Director, Managing Partner
11/06/2023

Confident Cannabis
All Rights Reserved
support@confidentcannabis.com
(866) 506-5866
www.confidentcannabis.com



This product has been tested by Infinite Chemical Analysis, LLC using valid testing methodologies and a quality system as required by state law. All LQC samples were performed and met the prescribed acceptance criteria in 16 CCR section 15730, pursuant to 16 CCR section 15726(e)(13). Values reported relate only to the product tested. Infinite Chemical Analysis, LLC makes no claims as to the efficacy, safety or other risks associated with any detected or non-detected levels of any compounds reported herein. This Certificate shall not be reproduced except in full, without the written approval of Infinite Chemical Analysis, LLC.



Certificate of Analysis

QA SAMPLE - INFORMATIONAL ONLY

1 of 3

ICAL ID: 20231102-019
Sample: CA231102-007-022
CBD Pina Vape
Strain: CBD Pina Vape
Category: Concentrates & Extracts
Type: Other

CBD Living
Lic. #
None
San Diego, CA 92121
Lic. #

Batch#:
Batch Size Collected:
Total Batch Size:
Collected: 11/06/2023; Received: 11/06/2023
Completed: 11/06/2023

Moisture NT Water Activity NT	Total THC 0.27%	Total CBD 44.21%	Total Cannabinoids 56.95%	Total Terpenes NT
--	---------------------------	----------------------------	-------------------------------------	-----------------------------

Summary	SOP Used	Date Tested	
Batch Cannabinoids	POT-PREP-001	11/03/2023	Complete Complete



Scan to see results

Cannabinoid Profile

Analyte	LOQ (mg/g)	LOD (mg/g)	%	mg/g	Analyte	LOQ (mg/g)	LOD (mg/g)	%	mg/g
THCa	0.3680	0.0924	ND	ND	CBGa	0.3965	0.1322	ND	ND
Δ9-THC	0.3680	0.1024	0.27	2.7	CBG	0.3920	0.1307	0.83	8.3
Δ8-THC	0.3680	0.0506	ND	ND	CBN	0.3680	0.0780	3.20	32.0
THCV	0.3680	0.0423	ND	ND	Total THC			0.27	2.68
CBDa	0.3680	0.0951	ND	ND	Total CBD			44.21	442.08
CBD	0.3680	0.0815	44.21	442.1	Total			56.95	569.47
CBDV	0.3680	0.0421	0.74	7.4					
CBC	0.4549	0.1516	7.70	77.0					

Total THC=THCa * 0.877 + d9-THC + d8-THC + d8-THC; Total CBD = CBDa * 0.877 + CBD. LOD= Limit of Detection, LOQ= Limit of Quantitation, ND= Not Detected, NR= Not Reported. Potency is reported on a dry weight basis. Instrumentation and analysis SOPs used: Cannabinoids:UHPLC-DAD(POT-INST-005),Moisture:Moisture Analyzer(MOISTURE-001),Water Activity:Water Activity Meter(WA-INST-002), Foreign Material:Microscope(FOREIGN-001). Density measured at 19-24 °C, Water Activity measured at 0-90% RH. All QA submitted by the client, All CA State Compliance sampled using SAMPL-SOP-001.

Terpene Profile

Analyte	LOQ (mg/g)	LOD (mg/g)	%	mg/g	Analyte	LOQ (mg/g)	LOD (mg/g)	%	mg/g
---------	------------	------------	---	------	---------	------------	------------	---	------

NR= Not Reported (no analysis was performed), ND= Not Detected (the concentration is less than the Limit of Detection (LOD)). Analytical instrumentation used: HS-GC-MS; samples analyzed according to SOP TERP-INST-003.



Infinite Chemical Analysis Labs
8312 Miramar Mall
San Diego, CA
(858) 623-2740
www.infiniteCAL.com
Lic# C8-000047-LIC

Josh M Swider

Josh Swider
Lab Director, Managing Partner
11/06/2023

Confident Cannabis
All Rights Reserved
support@confidentcannabis.com
(866) 506-5866
www.confidentcannabis.com



This product has been tested by Infinite Chemical Analysis, LLC using valid testing methodologies and a quality system as required by state law. All LQC samples were performed and met the prescribed acceptance criteria in 16 CCR section 15730, pursuant to 16 CCR section 15726(e)(13). Values reported relate only to the product tested. Infinite Chemical Analysis, LLC makes no claims as to the efficacy, safety or other risks associated with any detected or non-detected levels of any compounds reported herein. This Certificate shall not be reproduced except in full, without the written approval of Infinite Chemical Analysis, LLC.



Certificate of Analysis

QA SAMPLE - INFORMATIONAL ONLY

2 of 3

ICAL ID: 20231102-019
Sample: CA231102-007-022
CBD Pina Vape
Strain: CBD Pina Vape
Category: Concentrates & Extracts
Type: Other

CBD Living
Lic. #
None
San Diego, CA 92121
Lic. #

Batch#:
Batch Size Collected:
Total Batch Size:
Collected: 11/06/2023; Received: 11/06/2023
Completed: 11/06/2023

Residual Solvent Analysis

Category 1	LOQ	LOD	Limit	Status	Category 2	LOQ	LOD	Limit	Status	Category 2	LOQ	LOD	Limit	Status
------------	-----	-----	-------	--------	------------	-----	-----	-------	--------	------------	-----	-----	-------	--------

NR= Not Reported (no analysis was performed), ND= Not Detected (the concentration is less then the Limit of Detection (LOD)). Analytical instrumentation used: HS-GC-MS; samples analyzed according to SOP RS-INST-003.

Heavy Metal Screening

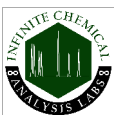
LOQ	LOD	Limit	Status
-----	-----	-------	--------

NR= Not Reported (no analysis was performed), ND= Not Detected (the concentration is less then the Limit of Detection (LOD)). Analytical instrumentation used: ICP-MS; samples analyzed according to SOP HM-INST-003.

Microbiological Screening

Limit	Result	Status
-------	--------	--------

ND=Not Detected. Analytical instrumentation used:qPCR; samples analyzed according to SOP MICRO-INST-001.



Infinite Chemical Analysis Labs
8312 Miramar Mall
San Diego, CA
(858) 623-2740
www.infiniteCAL.com
Lic# C8-000047-LIC

Josh M Swider

Josh Swider
Lab Director, Managing Partner
11/06/2023

Confident Cannabis
All Rights Reserved
support@confidentcannabis.com
(866) 506-5866
www.confidentcannabis.com



This product has been tested by Infinite Chemical Analysis, LLC using valid testing methodologies and a quality system as required by state law. All LQC samples were performed and met the prescribed acceptance criteria in 16 CCR section 15730, pursuant to 16 CCR section 15726(e)(13). Values reported relate only to the product tested. Infinite Chemical Analysis, LLC makes no claims as to the efficacy, safety or other risks associated with any detected or non-detected levels of any compounds reported herein. This Certificate shall not be reproduced except in full, without the written approval of Infinite Chemical Analysis, LLC.



Certificate of Analysis

QA SAMPLE - INFORMATIONAL ONLY

3 of 3

ICAL ID: 20231102-019
Sample: CA231102-007-022
CBD Pina Vape
Strain: CBD Pina Vape
Category: Concentrates & Extracts
Type: Other

CBD Living
Lic. #
None
San Diego, CA 92121
Lic. #

Batch#:
Batch Size Collected:
Total Batch Size:
Collected: 11/06/2023; Received: 11/06/2023
Completed: 11/06/2023

Chemical Residue Screening

Category 1	LOQ	LOD	Status	Mycotoxins	LOQ	LOD	Limit	Status
------------	-----	-----	--------	------------	-----	-----	-------	--------

Category 2	LOQ	LOD	Limit	Status	Category 2	LOQ	LOD	Limit	Status
------------	-----	-----	-------	--------	------------	-----	-----	-------	--------

Other Analyte(s):

NR= Not Reported (no analysis was performed), ND= Not Detected (the concentration is less than the Limit of Detection (LOD)). Analytical instrumentation used: LC-MS-MS & GC-MS-MS; samples analyzed according to SOPs PESTMYCO-LC-INST-004 and PEST-GC-INST-003.



Infinite Chemical Analysis Labs
8312 Miramar Mall
San Diego, CA
(858) 623-2740
www.infiniteCAL.com
Lic# C8-000047-LIC

Josh M Swider

Josh Swider
Lab Director, Managing Partner
11/06/2023

Confident Cannabis
All Rights Reserved
support@confidentcannabis.com
(866) 506-5866
www.confidentcannabis.com



This product has been tested by Infinite Chemical Analysis, LLC using valid testing methodologies and a quality system as required by state law. All LQC samples were performed and met the prescribed acceptance criteria in 16 CCR section 15730, pursuant to 16 CCR section 15726(e)(13). Values reported relate only to the product tested. Infinite Chemical Analysis, LLC makes no claims as to the efficacy, safety or other risks associated with any detected or non-detected levels of any compounds reported herein. This Certificate shall not be reproduced except in full, without the written approval of Infinite Chemical Analysis, LLC.



Certificate of Analysis

QA SAMPLE - INFORMATIONAL ONLY

1 of 3

ICAL ID: 20231102-017
Sample: CA231102-007-020
CBD Mango Vape
Strain: CBD Mango Vape
Category: Concentrates & Extracts
Type: Other

CBD Living
Lic. #
None
San Diego, CA 92121
Lic. #

Batch#:
Batch Size Collected:
Total Batch Size:
Collected: 11/06/2023; Received: 11/06/2023
Completed: 11/06/2023

Moisture NT Water Activity NT	Total THC 0.26%	Total CBD 43.80%	Total Cannabinoids 56.39%	Total Terpenes NT
--	---------------------------	----------------------------	-------------------------------------	-----------------------------

Summary SOP Used Date Tested
 Batch POT-PREP-001 11/03/2023 Complete
 Cannabinoids



Scan to see results

Cannabinoid Profile

Analyte	LOQ (mg/g)	LOD (mg/g)	%	mg/g	Analyte	LOQ (mg/g)	LOD (mg/g)	%	mg/g
THCa	0.3680	0.0924	ND	ND	CBGa	0.3965	0.1322	ND	ND
Δ9-THC	0.3680	0.1024	0.26	2.6	CBG	0.3920	0.1307	0.85	8.5
Δ8-THC	0.3680	0.0506	ND	ND	CBN	0.3680	0.0780	3.18	31.8
THCV	0.3680	0.0423	ND	ND	Total THC			0.26	2.61
CBDa	0.3680	0.0951	ND	ND	Total CBD			43.80	437.98
CBD	0.3680	0.0815	43.80	438.0	Total			56.39	563.87
CBDV	0.3680	0.0421	0.75	7.5					
CBC	0.4549	0.1516	7.55	75.5					

Total THC=THCa * 0.877 + d9-THC + d8-THC + d8-THC; Total CBD = CBDa * 0.877 + CBD. LOD= Limit of Detection, LOQ= Limit of Quantitation, ND= Not Detected, NR= Not Reported. Potency is reported on a dry weight basis. Instrumentation and analysis SOPs used: Cannabinoids:UHPLC-DAD(POT-INST-005),Moisture:Moisture Analyzer(MOISTURE-001),Water Activity:Water Activity Meter(WA-INST-002), Foreign Material:Microscope(FOREIGN-001). Density measured at 19-24 °C, Water Activity measured at 0-90% RH. All QA submitted by the client, All CA State Compliance sampled using SAMPL-SOP-001.

Terpene Profile

Analyte	LOQ (mg/g)	LOD (mg/g)	%	mg/g	Analyte	LOQ (mg/g)	LOD (mg/g)	%	mg/g
---------	------------	------------	---	------	---------	------------	------------	---	------

NR= Not Reported (no analysis was performed), ND= Not Detected (the concentration is less than the Limit of Detection (LOD)). Analytical instrumentation used: HS-GC-MS; samples analyzed according to SOP TERP-INST-003.



Infinite Chemical Analysis Labs
8312 Miramar Mall
San Diego, CA
(858) 623-2740
www.infiniteCAL.com
Lic# C8-000047-LIC

Josh M Swider

Josh Swider
Lab Director, Managing Partner
11/06/2023

Confident Cannabis
All Rights Reserved
support@confidentcannabis.com
(866) 506-5866
www.confidentcannabis.com



This product has been tested by Infinite Chemical Analysis, LLC using valid testing methodologies and a quality system as required by state law. All LQC samples were performed and met the prescribed acceptance criteria in 16 CCR section 15730, pursuant to 16 CCR section 15726(e)(13). Values reported relate only to the product tested. Infinite Chemical Analysis, LLC makes no claims as to the efficacy, safety or other risks associated with any detected or non-detected levels of any compounds reported herein. This Certificate shall not be reproduced except in full, without the written approval of Infinite Chemical Analysis, LLC.



Certificate of Analysis

QA SAMPLE - INFORMATIONAL ONLY

2 of 3

ICAL ID: 20231102-017
Sample: CA231102-007-020
CBD Mango Vape
Strain: CBD Mango Vape
Category: Concentrates & Extracts
Type: Other

CBD Living
Lic. #
None
San Diego, CA 92121
Lic. #

Batch#:
Batch Size Collected:
Total Batch Size:
Collected: 11/06/2023; Received: 11/06/2023
Completed: 11/06/2023

Residual Solvent Analysis

Category 1	LOQ	LOD	Limit	Status	Category 2	LOQ	LOD	Limit	Status	Category 2	LOQ	LOD	Limit	Status
------------	-----	-----	-------	--------	------------	-----	-----	-------	--------	------------	-----	-----	-------	--------

NR= Not Reported (no analysis was performed), ND= Not Detected (the concentration is less then the Limit of Detection (LOD)). Analytical instrumentation used: HS-GC-MS; samples analyzed according to SOP RS-INST-003.

Heavy Metal Screening

LOQ	LOD	Limit	Status
-----	-----	-------	--------

NR= Not Reported (no analysis was performed), ND= Not Detected (the concentration is less then the Limit of Detection (LOD)). Analytical instrumentation used: ICP-MS; samples analyzed according to SOP HM-INST-003.

Microbiological Screening

Limit	Result	Status
-------	--------	--------

ND=Not Detected. Analytical instrumentation used:qPCR; samples analyzed according to SOP MICRO-INST-001.



Infinite Chemical Analysis Labs
8312 Miramar Mall
San Diego, CA
(858) 623-2740
www.infiniteCAL.com
Lic# C8-0000047-LIC

Josh M Swider

Josh Swider
Lab Director, Managing Partner
11/06/2023

Confident Cannabis
All Rights Reserved
support@confidentcannabis.com
(866) 506-5866
www.confidentcannabis.com



This product has been tested by Infinite Chemical Analysis, LLC using valid testing methodologies and a quality system as required by state law. All LQC samples were performed and met the prescribed acceptance criteria in 16 CCR section 15730, pursuant to 16 CCR section 15726(e)(13). Values reported relate only to the product tested. Infinite Chemical Analysis, LLC makes no claims as to the efficacy, safety or other risks associated with any detected or non-detected levels of any compounds reported herein. This Certificate shall not be reproduced except in full, without the written approval of Infinite Chemical Analysis, LLC.



Certificate of Analysis

QA SAMPLE - INFORMATIONAL ONLY

3 of 3

ICAL ID: 20231102-017
Sample: CA231102-007-020
CBD Mango Vape
Strain: CBD Mango Vape
Category: Concentrates & Extracts
Type: Other

CBD Living
Lic. #
None
San Diego, CA 92121
Lic. #

Batch#:
Batch Size Collected:
Total Batch Size:
Collected: 11/06/2023; Received: 11/06/2023
Completed: 11/06/2023

Chemical Residue Screening

Category 1	LOQ	LOD	Status	Mycotoxins	LOQ	LOD	Limit	Status
------------	-----	-----	--------	------------	-----	-----	-------	--------

Category 2	LOQ	LOD	Limit	Status	Category 2	LOQ	LOD	Limit	Status
------------	-----	-----	-------	--------	------------	-----	-----	-------	--------

Other Analyte(s):

NR= Not Reported (no analysis was performed), ND= Not Detected (the concentration is less than the Limit of Detection (LOD)). Analytical instrumentation used: LC-MS-MS & GC-MS-MS; samples analyzed according to SOPs PESTMYCO-LC-INST-004 and PEST-GC-INST-003.



Infinite Chemical Analysis Labs
8312 Miramar Mall
San Diego, CA
(858) 623-2740
www.infiniteCAL.com
Lic# C8-000047-LIC

Josh M Swider

Josh Swider
Lab Director, Managing Partner
11/06/2023

Confident Cannabis
All Rights Reserved
support@confidentcannabis.com
(866) 506-5866
www.confidentcannabis.com



This product has been tested by Infinite Chemical Analysis, LLC using valid testing methodologies and a quality system as required by state law. All LQC samples were performed and met the prescribed acceptance criteria in 16 CCR section 15730, pursuant to 16 CCR section 15726(e)(13). Values reported relate only to the product tested. Infinite Chemical Analysis, LLC makes no claims as to the efficacy, safety or other risks associated with any detected or non-detected levels of any compounds reported herein. This Certificate shall not be reproduced except in full, without the written approval of Infinite Chemical Analysis, LLC.